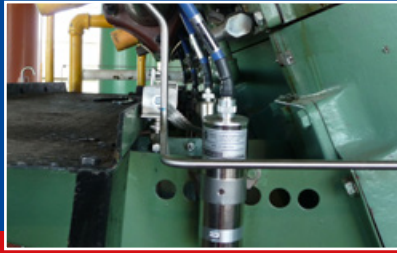


# Externally Mounted Ignition Coils With Diagnostic Interface





## Externally Mounted Ignition Coils with Diagnostic Interface

MOTORTECH offers the typical shielded ignition coils (externally as also flange mounted) with an integrated BNC connector. The MOTORTECH SparkView high voltage indicator or a digital scope meter can be hooked up and will read the high voltage demand of the spark plug.



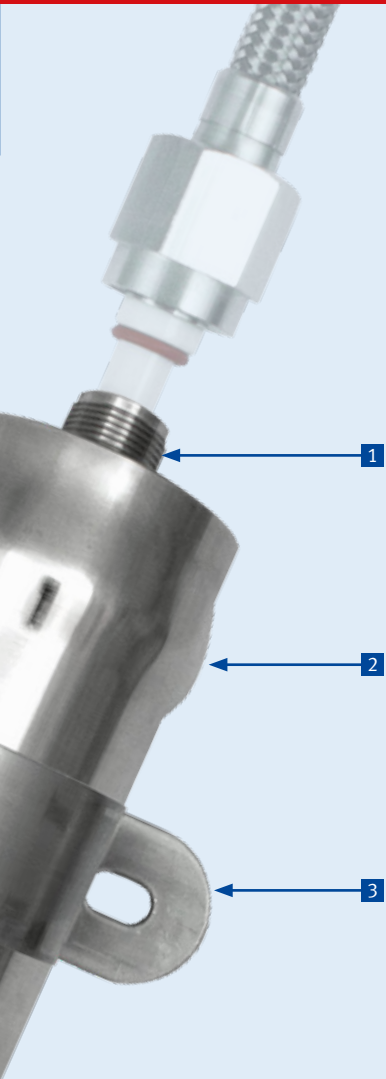
### General Features

- Allow an inductively access to the high voltage circuit of the shielded ignition coils
- Offer great advantages to service engineers and operators
- Available with 3 and 2 pole primary termination
- Offered with 3/4-20 UNEF and 1-20 UNEF high voltage termination
- Meet CSA Class I, Division 2, Group C/D

### Features

- 1 High voltage termination for spark plug lead connection
  - 3/4-20 UNEF outer thread for ALTRONIC® compatibility
  - 1-20 UNEF outer thread FAIRBANKS MORSE® style
- 2 Nickel plated steel housings with safety belt
- 3 Stainless steel brackets (replaceable)
- 4 Different versions for use with MOTORTECH ignition controllers (support MOST and ASC technology) or to function with the ALTRONIC® patented “Spark Reference” high voltage indication system
- 5 Primary termination for primary lead connection
  - 3 pole MIL style connectors for ALTRONIC® compatibility
  - 2 pole MIL style connectors FAIRBANKS MORSE® style
- 6 Additional BNC connector for high voltage measurement





### SparkView – MOTORTECH High Voltage Indicator

The SparkView is a handheld device developed by MOTORTECH that can monitor the high voltage required by the spark plug while the engine is running. With a BNC cable and the display for up to 40 kV, it is easy to determine the condition of the spark plugs and the time at which they need to be replaced.



### Shielded Primary Leads

MOTORTECH primary leads are available as Conventional or New Flex Style that is produced with a special multilayer wire. The new primary leads offer a significant higher flexibility than conventional leads, shielded with braided steel, while being highly resistant to all kinds of environmental conditions. Primary leads are available with rigid terminations in several different configurations with durable 90° and 180° 2 pole and 3 pole connectors.



### Shielded Spark Plug Leads

Available in Conventional or MotBlues style to replace any product in the market. The MotBlues spark plug wire is a MOTORTECH development with a special multilayer design to ensure that no humidity can be trapped in the lead.

## Ordering Information

### 3 Pole Primary Connector Arrangement



P/N	Primary Termination	HV Termination	Polarity	MOST	Equivalent to <sup>1)</sup>
95.09.070	MIL style, 3 pole, pin	3/4-20 UNEF	(-) ground	x	95.09.005
95.09.073	MIL style, 3 pole, pin	3/4-20 UNEF	(+) ground	Not applicable	291001-S, 95.09.053
95.09.074	MIL style, 3 pole, pin	3/4-20 UNEF	(-) ground	Not applicable	591010-S, 95.09.054
95.09.075	MIL style, 3 pole, pin	3/4-20 UNEF	(-) ground	Not applicable	501061-S, 2881178, 95.09.055

<sup>1)</sup> Part numbers indicated for comparison purposes.

### 2 Pole Primary Connector Arrangement



P/N	Primary Termination	HV Termination	Polarity	MOST	Equivalent to <sup>1)</sup>
95.08.070	MIL style, 2 pole, pin	1-20 UNEF	(-) ground	x	PPT2477AD, PPT2477ADL, 95.08.003

<sup>1)</sup> Part numbers indicated for comparison purposes.

## We aim at your problems!



Regardless of which part of the globe we need to travel to.

We know that the stakes are high, and therefore we outperform the others. That is because we want everything to run smoothly at your site, everywhere and at any time.



This is entirely in keeping up with our motto:  
Let us drop everything and work on your problem!



Distribution partner for DENSO spark plugs



### MOTORTECH GmbH

Hogrevestr. 21-23  
29223 Celle  
Phone +49 5141 93 99 0  
Fax +49 5141 93 99 99  
[www.motortech.de](http://www.motortech.de)  
[motortech@motortech.de](mailto:motortech@motortech.de)

### MOTORTECH AMERICAS, LLC

1400 Dealers Avenue, Suite A  
New Orleans, LA 70123  
Phone: +1 504 355 4212  
Fax +1 504 355 4217  
[www.motortechamericas.com](http://www.motortechamericas.com)  
[info@motortechamericas.com](mailto:info@motortechamericas.com)

Distributed by:

#### Copyright

Copyright reserved for all materials used in MOTORTECH publications. Any reproduction or use of items such as photos or text passages in other electronic or printed publications is only permissible with consent from MOTORTECH.

#### Trademark notice

MOTORTECH products and the MOTORTECH logo are registered or common law trademarks of MOTORTECH Holding GmbH.

All OEM names and part numbers are cited only for reference purposes. All rights to trademarks, logos and symbols used or displayed in MOTORTECH publications are reserved exclusively by the respective owners and are used only for reference purposes.